

Ađır Hizmet Tipi Kablo Kanalı H 100 Heavy Duty Cable Tray H 100

İÇİNDEKİLER INDEX

| | |
|-----------|--|
| 40 | Ađır Hizmet Tipi Kablo Kanalı Heavy Duty Cable Tray |
| 41 | 90° Yatay Dönüş Modülü 90° Horizontal Elbow Module T Dönüş Modülü T Module Dörtlü Bağlantı Modülü + Connection Module |
| 42 | İç Bükey Dönüş Modülü Flexible Vertical Bend - Inside Dış Bükey Dönüş Modülü Flexible Vertical Bend - Outside İç Bükey Dönüş Modülü 90° Vertical Bend - Inside Dış Bükey Dönüş Modülü 90° Vertical Bend - Outside |
| 43 | Redüksiyon Reduction Redüksiyon - Sağ Reduction - Right Redüksiyon - Sol Reduction - Left Z Redüksiyon Z Reduction |
| 44 | "T" Ortadan İniş Modülü "T" Middle Descent Module "T" Duvardan İniş Modülü "T" Wall Descent Module Ek Elemanı Joint Fitting |
| 45 | Flexible Dönüş Modülü Flexible Elbow Modul Seviye Deđiştirme Elemanı Level Change Unit Separatör Seperator |



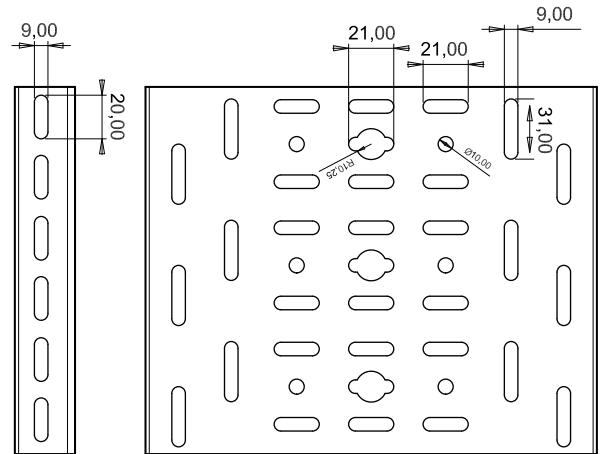
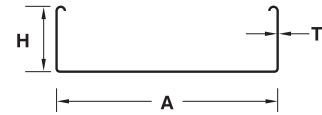
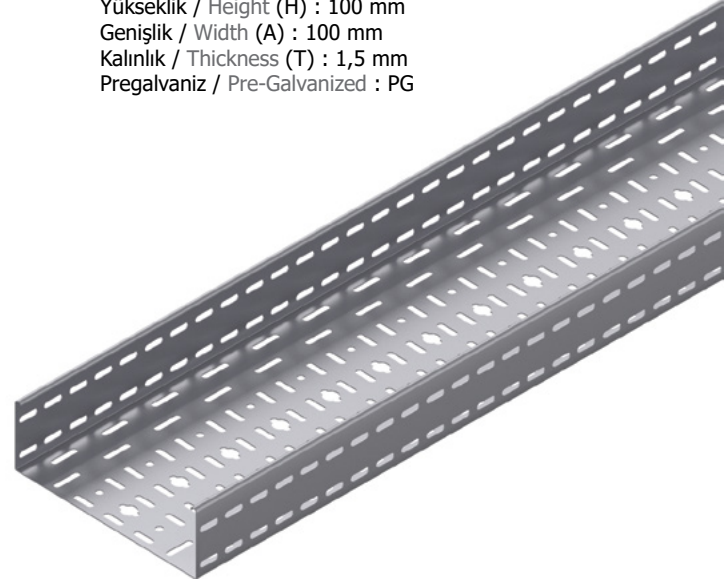
Pregalvaniz Pre-Galvanized

Ağır Hizmet Tipi Kablo Kanalı H100 Heavy Duty Cable Tray H100

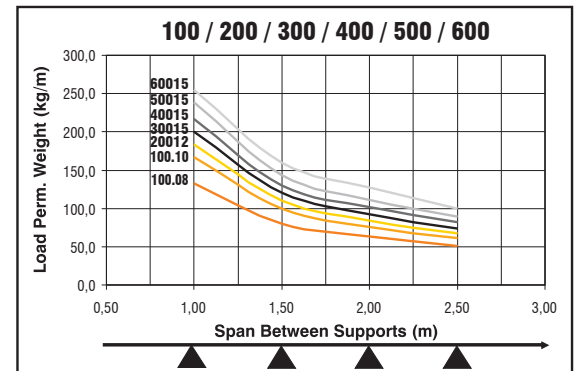
| Sipariş Kodu Order Code | Yükseklik Height (H) mm | Genişlik Width (A) mm | Kalınlık Thickness (T) mm | Ağırlık Weight Kg./m. |
|----------------------------|-------------------------------|-----------------------------|---------------------------------|-----------------------------|
| AFC-100 A 100.12 | 100 | 100 | 1.2 | 2,654 |
| AFC-100 A 100.15 | 100 | 100 | 1.5 | 3,318 |
| AFC-100 A 100.20 | 100 | 100 | 2.0 | 4,424 |
| AFC-100 A 150.12 | 100 | 150 | 1.2 | 3,033 |
| AFC-100 A 150.15 | 100 | 150 | 1.5 | 3,791 |
| AFC-100 A 150.20 | 100 | 150 | 2.0 | 5,055 |
| AFC-100 A 200.15 | 100 | 200 | 1.5 | 4,283 |
| AFC-100 A 200.20 | 100 | 200 | 2.0 | 5,710 |
| AFC-100 A 300.15 | 100 | 300 | 1.5 | 5,413 |
| AFC-100 A 300.20 | 100 | 300 | 2.0 | 7,218 |
| AFC-100 A 400.15 | 100 | 400 | 1.5 | 6,448 |
| AFC-100 A 400.20 | 100 | 400 | 2.0 | 8,598 |
| AFC-100 A 500.15 | 100 | 500 | 1.5 | 7,540 |
| AFC-100 A 500.20 | 100 | 500 | 2.0 | 10,053 |
| AFC-100 A 600.15 | 100 | 600 | 1.5 | 8,575 |
| AFC-100 A 600.20 | 100 | 600 | 2.0 | 11,434 |

Örnek Sipariş :

Yükseklik / Height (H) : 100 mm
Genişlik / Width (A) : 100 mm
Kalınlık / Thickness (T) : 1,5 mm
Pregalvaniz / Pre-Galvanized : PG



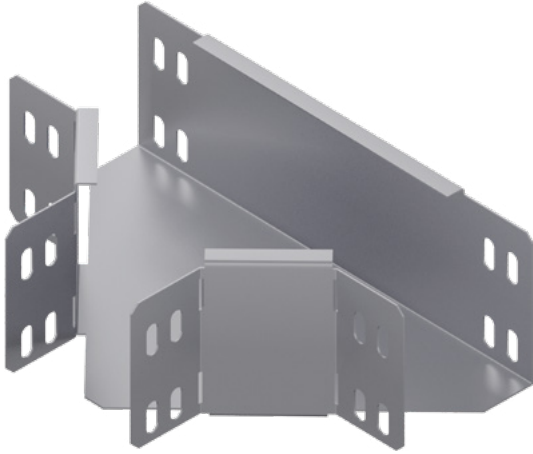
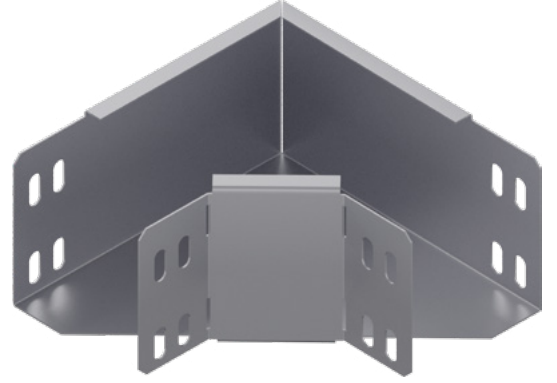
- ▶ Lütfen siparişlerinizde sipariş kodunu bildiriniz.
Please order by product code.
- ▶ Farklı kalınlık ve ölçülerdeki siparişleriniz için lütfen firmamızı arayınız.
Please contact us for your custom orders.
- ▶ Malzeme ağırlıkları yaklaşık değerlerdir, \pm % 10 değişim gösterebilir.
All material weights are approximate and may vary by +/- 10%.
- ▶ Standart uzunluk 2500 ve 3000 mm'dir.
Standard widths are available in 2500, and 3000 mm.



90° Yatay Dönüş Modülü

90° Horizontal Elbow Module

| Sipariş Kodu Order Code | Yükseklik Height (H) mm | Genişlik Width (AB) mm | Kalınlık Thickness (T) mm | Ağırlık Weight Kg./Ad. |
|----------------------------|-------------------------------|------------------------------|---------------------------------|------------------------------|
| AFC-100 AK 100.15 | 100 | 100 | 1.5 | 0,915 |
| AFC-100 AK 150.15 | 100 | 150 | 1.5 | 1,404 |
| AFC-100 AK 200.15 | 100 | 200 | 1.5 | 1,856 |
| AFC-100 AK 300.20 | 100 | 300 | 2.0 | 3,915 |
| AFC-100 AK 400.20 | 100 | 400 | 2.0 | 5,668 |
| AFC-100 AK 500.20 | 100 | 500 | 2.0 | 7,737 |
| AFC-100 AK 600.20 | 100 | 600 | 2.0 | 10,120 |



T Dönüş Modülü

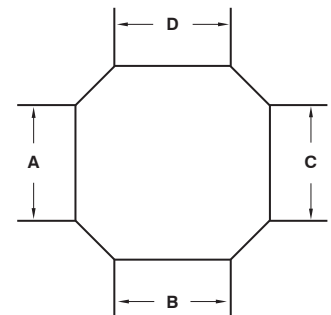
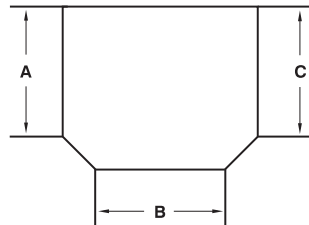
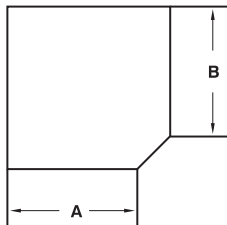
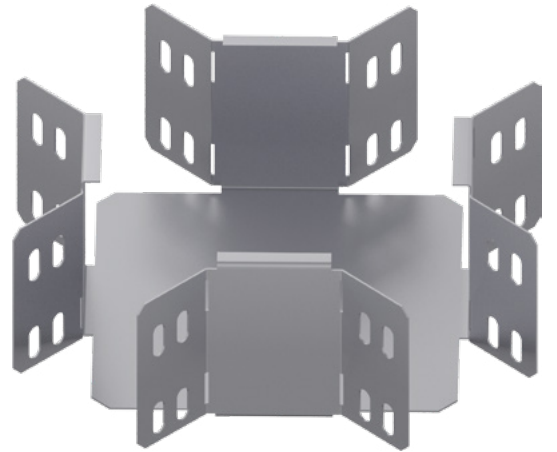
T Module

| Sipariş Kodu Order Code | Yükseklik Height (H) mm | Genişlik Width (ABC) mm | Kalınlık Thickness (T) mm | Ağırlık Weight Kg./Ad. |
|----------------------------|-------------------------------|-------------------------------|---------------------------------|------------------------------|
| AFC-100 AT 100.15 | 100 | 100 | 1.5 | 1,128 |
| AFC-100 AT 150.15 | 100 | 150 | 1.5 | 1,674 |
| AFC-100 AT 200.15 | 100 | 200 | 1.5 | 2,136 |
| AFC-100 AT 300.20 | 100 | 300 | 2.0 | 4,313 |
| AFC-100 AT 400.20 | 100 | 400 | 2.0 | 6,093 |
| AFC-100 AT 500.20 | 100 | 500 | 2.0 | 8,188 |
| AFC-100 AT 600.20 | 100 | 600 | 2.0 | 10,597 |

Dörtlü Bağlantı Modülü

+ Connection Module

| Sipariş Kodu Order Code | Yükseklik Height (H) mm | Genişlik Width (ABCD) mm | Kalınlık Thickness (T) mm | Ağırlık Weight Kg./Ad. |
|----------------------------|-------------------------------|--------------------------------|---------------------------------|------------------------------|
| AFC-100 AD 100.15 | 100 | 100 | 1.5 | 1,235 |
| AFC-100 AD 150.15 | 100 | 150 | 1.5 | 1,745 |
| AFC-100 AD 200.15 | 100 | 200 | 1.5 | 2,138 |
| AFC-100 AD 300.20 | 100 | 300 | 2.0 | 4,132 |
| AFC-100 AD 400.20 | 100 | 400 | 2.0 | 5,727 |
| AFC-100 AD 500.20 | 100 | 500 | 2.0 | 7,638 |
| AFC-100 AD 600.20 | 100 | 600 | 2.0 | 9,862 |





Pregalvaniz Pre-Galvanized

İç Bükey Dönüş Modülü

Flexible Vertical Bend - Inside

| Sipariş Kodu Order Code | Yükseklik Height (H) mm | Genişlik Width (AB) mm | Kalınlık Thickness (T) mm | Ağırlık Weight Kg./Ad. |
|----------------------------|-------------------------------|------------------------------|---------------------------------|------------------------------|
| AFC-100 AİB 100.15 | 100 | 100 | 1.5 | 2,654 |
| AFC-100 AİB 150.15 | 100 | 150 | 1.5 | 3,033 |
| AFC-100 AİB 200.15 | 100 | 200 | 1.5 | 3,426 |
| AFC-100 AİB 300.20 | 100 | 300 | 2.0 | 5,774 |
| AFC-100 AİB 400.20 | 100 | 400 | 2.0 | 6,878 |
| AFC-100 AİB 500.20 | 100 | 500 | 2.0 | 8,042 |
| AFC-100 AİB 600.20 | 100 | 600 | 2.0 | 9,147 |



Dış Bükey Dönüş Modülü

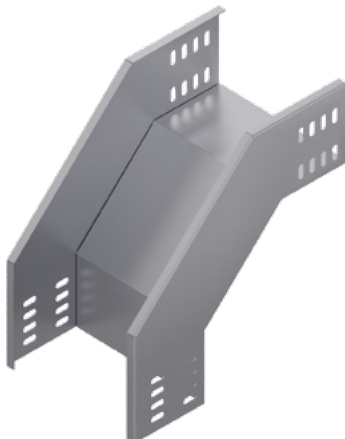
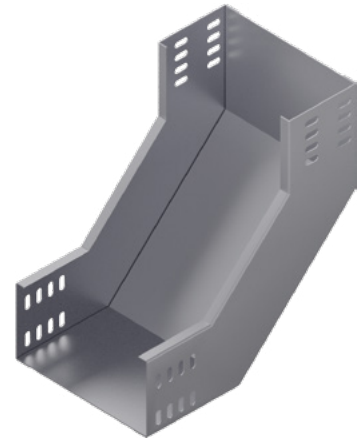
Flexible Vertical Bend - Outside

| Sipariş Kodu Order Code | Yükseklik Height (H) mm | Genişlik Width (AB) mm | Kalınlık Thickness (T) mm | Ağırlık Weight Kg./Ad. |
|----------------------------|-------------------------------|------------------------------|---------------------------------|------------------------------|
| AFC-100 ADB 100.15 | 100 | 100 | 1.5 | 2,654 |
| AFC-100 ADB 150.15 | 100 | 150 | 1.5 | 3,033 |
| AFC-100 ADB 200.15 | 100 | 200 | 1.5 | 3,426 |
| AFC-100 ADB 300.20 | 100 | 300 | 2.0 | 5,774 |
| AFC-100 ADB 400.20 | 100 | 400 | 2.0 | 6,878 |
| AFC-100 ADB 500.20 | 100 | 500 | 2.0 | 8,042 |
| AFC-100 ADB 600.20 | 100 | 600 | 2.0 | 9,147 |

İç Bükey Dönüş Modülü

90° Vertical Bend - Inside

| Sipariş Kodu Order Code | Yükseklik Height (H) mm | Genişlik Width (AB) mm | Kalınlık Thickness (T) mm | Ağırlık Weight Kg./Ad. |
|----------------------------|-------------------------------|------------------------------|---------------------------------|------------------------------|
| AFC-100 SİB 100.15 | 100 | 100 | 1.5 | 1,948 |
| AFC-100 SİB 150.15 | 100 | 150 | 1.5 | 2,206 |
| AFC-100 SİB 200.15 | 100 | 200 | 1.5 | 2,465 |
| AFC-100 SİB 300.20 | 100 | 300 | 2.0 | 2,981 |
| AFC-100 SİB 400.20 | 100 | 400 | 2.0 | 3,497 |
| AFC-100 SİB 500.20 | 100 | 500 | 2.0 | 4,013 |
| AFC-100 SİB 600.20 | 100 | 600 | 2.0 | 4,530 |



Dış Bükey Dönüş Modülü

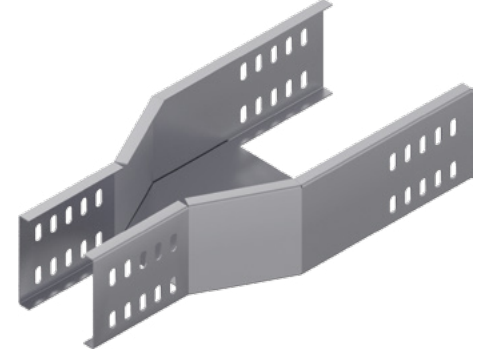
90° Vertical Bend - Outside

| Sipariş Kodu Order Code | Yükseklik Height (H) mm | Genişlik Width (AB) mm | Kalınlık Thickness (T) mm | Ağırlık Weight Kg./Ad. |
|----------------------------|-------------------------------|------------------------------|---------------------------------|------------------------------|
| AFC-100 SDB 100.15 | 100 | 100 | 1.5 | 1,869 |
| AFC-100 SDB 150.15 | 100 | 150 | 1.5 | 2,088 |
| AFC-100 SDB 200.15 | 100 | 200 | 1.5 | 2,306 |
| AFC-100 SDB 300.20 | 100 | 300 | 2.0 | 2,743 |
| AFC-100 SDB 400.20 | 100 | 400 | 2.0 | 3,180 |
| AFC-100 SDB 500.20 | 100 | 500 | 2.0 | 3,617 |
| AFC-100 SDB 600.20 | 100 | 600 | 2.0 | 4,054 |

Redüksiyon

Reduction

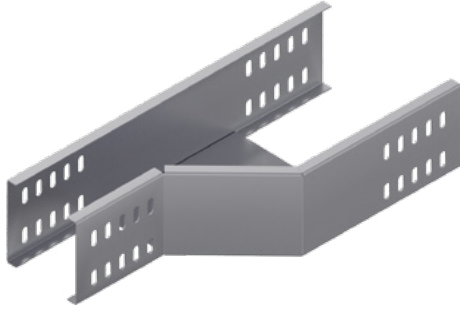
| Sipariş Kodu Order Code | Yükseklik Height (H) mm | Genişlik Width (A) mm | Genişlik Width (B) mm | Kalınlık Thickness (T) mm | Ağırlık Weight Kg./Ad. |
|----------------------------|-------------------------------|-----------------------------|-----------------------------|---------------------------------|------------------------------|
| AFC-100 AR 100.15 | 100 | 100 | 75 | 1.5 | 2,199 |
| AFC-100 AR 150.15 | 100 | 150 | 100 | 1.5 | 2,765 |
| AFC-100 AR 200.15 | 100 | 200 | 150 | 1.5 | 3,192 |
| AFC-100 AR 300.20 | 100 | 300 | 200 | 2.0 | 5,895 |
| AFC-100 AR 400.20 | 100 | 400 | 300 | 2.0 | 7,828 |
| AFC-100 AR 500.20 | 100 | 500 | 400 | 2.0 | 10,066 |
| AFC-100 AR 600.20 | 100 | 600 | 500 | 2.0 | 12,641 |



Redüksiyon - Sağ

Reduction - Right

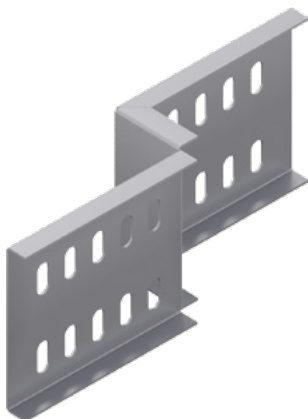
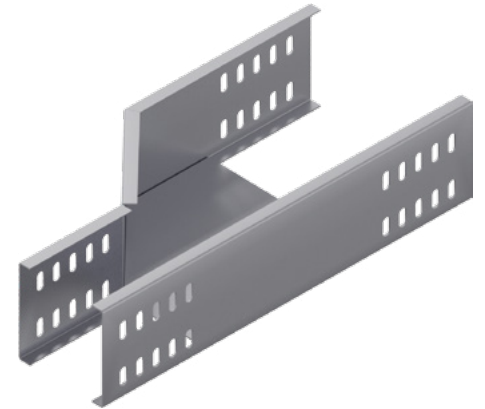
| Sipariş Kodu Order Code | Yükseklik Height (H) mm | Genişlik Width (A) mm | Genişlik Width (B) mm | Kalınlık Thickness (T) mm | Ağırlık Weight Kg./Ad. |
|----------------------------|-------------------------------|-----------------------------|-----------------------------|---------------------------------|------------------------------|
| AFC-100 ARR 100.15 | 100 | 100 | 75 | 1.5 | 1,225 |
| AFC-100 ARR 150.15 | 100 | 150 | 100 | 1.5 | 1,598 |
| AFC-100 ARR 200.15 | 100 | 200 | 150 | 1.5 | 1,894 |
| AFC-100 ARR 300.20 | 100 | 300 | 200 | 2.0 | 3,743 |
| AFC-100 ARR 400.20 | 100 | 400 | 300 | 2.0 | 5,215 |
| AFC-100 ARR 500.20 | 100 | 500 | 400 | 2.0 | 7,037 |
| AFC-100 ARR 600.20 | 100 | 600 | 500 | 2.0 | 9,186 |



Redüksiyon - Sol

Reduction - Left

| Sipariş Kodu Order Code | Yükseklik Height (H) mm | Genişlik Width (A) mm | Genişlik Width (B) mm | Kalınlık Thickness (T) mm | Ağırlık Weight Kg./Ad. |
|----------------------------|-------------------------------|-----------------------------|-----------------------------|---------------------------------|------------------------------|
| AFC-100 ARL 100.15 | 100 | 100 | 75 | 1.5 | 1,225 |
| AFC-100 ARL 150.15 | 100 | 150 | 100 | 1.5 | 1,598 |
| AFC-100 ARL 200.15 | 100 | 200 | 150 | 1.5 | 1,894 |
| AFC-100 ARL 300.20 | 100 | 300 | 200 | 2.0 | 3,743 |
| AFC-100 ARL 400.20 | 100 | 400 | 300 | 2.0 | 5,215 |
| AFC-100 ARL 500.20 | 100 | 500 | 400 | 2.0 | 7,037 |
| AFC-100 ARL 600.20 | 100 | 600 | 500 | 2.0 | 9,186 |



Z Redüksiyon

Z Reduction

| Sipariş Kodu Order Code | Yükseklik Height (H) mm | Genişlik Width (A) mm | Kalınlık Thickness (T) mm | Ağırlık Weight Kg./Ad. |
|----------------------------|-------------------------------|-----------------------------|---------------------------------|------------------------------|
| AFC-100 ZR 25.15 | 100 | 25 | 1.5 | 0,308 |
| AFC-100 ZR 50.15 | 100 | 50 | 1.5 | 0,338 |
| AFC-100 ZR 100.15 | 100 | 100 | 1.5 | 0,398 |
| AFC-100 ZR 150.15 | 100 | 150 | 1.5 | 0,458 |
| AFC-100 ZR 200.15 | 100 | 200 | 1.5 | 0,518 |
| AFC-100 ZR 300.20 | 100 | 300 | 2.0 | 0,850 |



Pregalvaniz Pre-Galvanized

“T” Ortadan İniş Modülü

“T” Middle Descent Module

| Sipariş Kodu Order Code | Yükseklik Height (H) mm | Genişlik Width (AB) mm | Kalınlık Thickness (T) mm | Ağırlık Weight Kg./Ad. |
|----------------------------|-------------------------------|------------------------------|---------------------------------|------------------------------|
| AFC-100 DTO 100.15 | 100 | 100 | 1.5 | 4,538 |
| AFC-100 DTO 150.15 | 100 | 150 | 1.5 | 5,125 |
| AFC-100 DTO 200.15 | 100 | 200 | 1.5 | 5,713 |
| AFC-100 DTO 300.20 | 100 | 300 | 2.0 | 6,887 |
| AFC-100 DTO 400.20 | 100 | 400 | 2.0 | 8,062 |
| AFC-100 DTO 500.20 | 100 | 500 | 2.0 | 9,237 |
| AFC-100 DTO 600.20 | 100 | 600 | 2.0 | 10,411 |



“T” Duvardan İniş Modülü

“T” Wall Descent Module

| Sipariş Kodu Order Code | Yükseklik Height (H) mm | Genişlik Width (AB) mm | Kalınlık Thickness (T) mm | Ağırlık Weight Kg./Ad. |
|----------------------------|-------------------------------|------------------------------|---------------------------------|------------------------------|
| AFC-100 DTD 100.15 | 100 | 100 | 1.5 | 2,704 |
| AFC-100 DTD 150.15 | 100 | 150 | 1.5 | 3,825 |
| AFC-100 DTD 200.15 | 100 | 200 | 1.5 | 5,664 |
| AFC-100 DTD 300.20 | 100 | 300 | 2.0 | 8,176 |
| AFC-100 DTD 400.20 | 100 | 400 | 2.0 | 17,222 |
| AFC-100 DTD 500.20 | 100 | 500 | 2.0 | 21,158 |
| AFC-100 DTD 600.20 | 100 | 600 | 2.0 | 24,902 |

Ek Elemanı

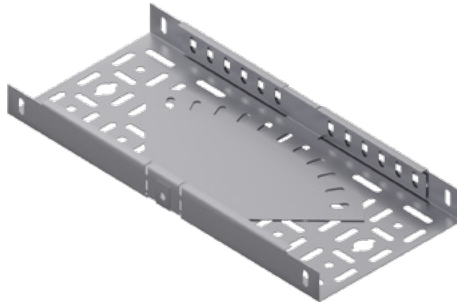
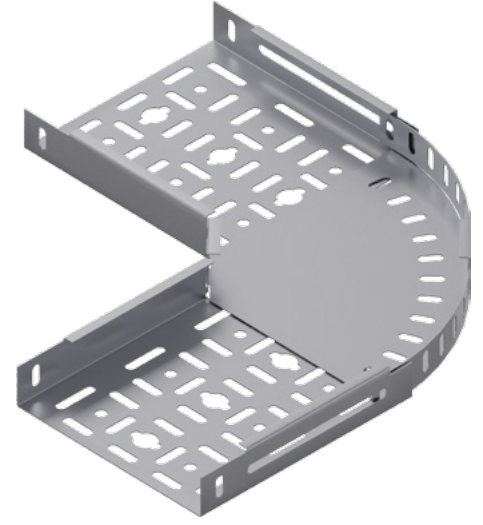
Joint Fitting

| Sipariş Kodu Order Code | Yükseklik Height (H) mm | Genişlik Width (A) mm | Kalınlık Thickness (T) mm | Ağırlık Weight Kg./Ad. |
|----------------------------|-------------------------------|-----------------------------|---------------------------------|------------------------------|
| AFC-100 AE 15.20 | 100 | 20 | 2.0 | 0,219 |



Flexible Dönüş Modülü Flexible Elbow Module

| Sipariş Kodu Order Code | Yükseklik Height (H) mm | Genişlik Width (AB) mm | Kalınlık Thickness (T) mm | Ağırlık Weight Kg./Ad. |
|----------------------------|-------------------------------|------------------------------|---------------------------------|------------------------------|
| AFC-100 FK 100.10 | 100 | 100 | 1.0 | 1,031 |
| AFC-100 FK 150.10 | 100 | 150 | 1.0 | 1,518 |
| AFC-100 FK 200.10 | 100 | 200 | 1.0 | 2,100 |
| AFC-100 FK 300.12 | 100 | 300 | 1.2 | 3,618 |
| AFC-100 FK 400.12 | 100 | 400 | 1.2 | 5,575 |
| AFC-100 FK 500.15 | 100 | 500 | 1.5 | 11,598 |
| AFC-100 FK 600.15 | 100 | 600 | 1.5 | 15,616 |



Seviye Değişirme Elemanı Level Change Unit

| Sipariş Kodu Order Code | Yükseklik Height (H) mm | Genişlik Width (A) mm | Kalınlık Thickness (T) mm | Ağırlık Weight Kg./Tk. |
|----------------------------|-------------------------------|-----------------------------|---------------------------------|------------------------------|
| AFC-100 SD 15.20 | 75 | 20 | 2.0 | 0,686 |

Separatör Seperator

| Sipariş Kodu Order Code | Yükseklik Height (H) mm | Genişlik Width (A) mm | Kalınlık Thickness (T) mm | Ağırlık Weight Kg./m. |
|----------------------------|-------------------------------|-----------------------------|---------------------------------|-----------------------------|
| AFC-100 SPK 20.15 | 100 | 20 | 1.5 | 1,397 |



Ağır Hizmet Tipi Kablo Kanalı H 100 Heavy Duty Cable Tray H 100

İÇİNDEKİLER INDEX

216

Ağır Hizmet Tipi Kablo Kanalı
Heavy Duty Cable Tray

217

90° Yatay Dönüş Modülü
90° Horizontal Elbow Module
T Dönüş Modülü
T Module
Dörtlü Bağlantı Modülü
+ Connection Module

218

İç Bükey Dönüş Modülü
Flexible Vertical Bend - Inside
Dış Bükey Dönüş Modülü
Flexible Vertical Bend - Outside
İç Bükey Dönüş Modülü
90° Vertical Bend - Inside
Dış Bükey Dönüş Modülü
90° Vertical Bend - Outside

219

Redüksiyon
Reduction
Redüksiyon - Sağ
Reduction - Right
Redüksiyon - Sol
Reduction - Left
Z Redüksiyon
Z Reduction

220

"T" Ortadan İniş Modülü
"T" Middle Descent Module
"T" Duvardan İniş Modülü
"T" Wall Descent Module
Ek Elemanı
Joint Fitting

221

Flexible Dönüş Modülü
Flexible Elbow Modul
Seviye Değiştirme Elemanı
Level Change Unit
Separatör
Seperator

Sıcak Daldırma
GHot Dip Galvanized



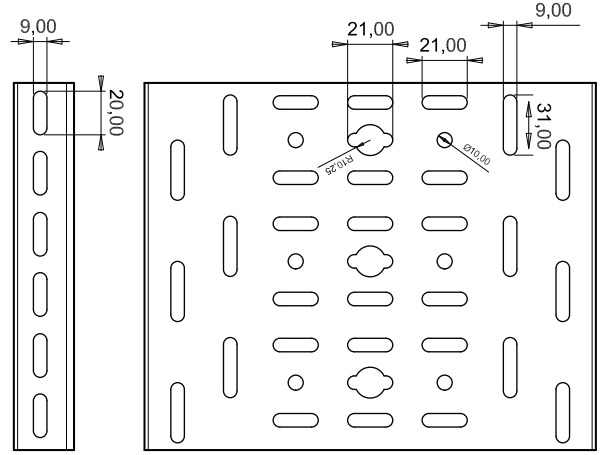
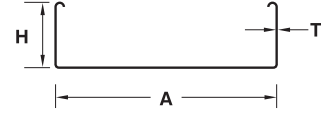
Sıcak Daldırma Hot Dip Galvanized

Ağır Hizmet Tipi Kablo Kanalı H100 Heavy Duty Cable Tray H100

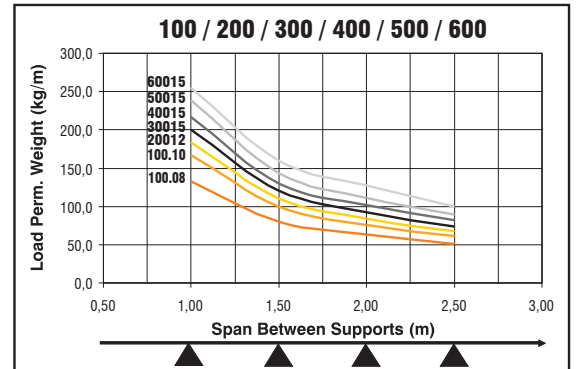
| Sipariş Kodu Order Code | Yükseklik Height (H) mm | Genişlik Width (A) mm | Kalınlık Thickness (T) mm | Ağırlık Weight Kg./m. |
|----------------------------|-------------------------------|-----------------------------|---------------------------------|-----------------------------|
| AFC-100 A 100.12 | 100 | 100 | 1.2 | 2,920 |
| AFC-100 A 100.15 | 100 | 100 | 1.5 | 3,650 |
| AFC-100 A 100.20 | 100 | 100 | 2.0 | 4,866 |
| AFC-100 A 150.12 | 100 | 150 | 1.2 | 3,336 |
| AFC-100 A 150.15 | 100 | 150 | 1.5 | 4,171 |
| AFC-100 A 150.20 | 100 | 150 | 2.0 | 5,561 |
| AFC-100 A 200.15 | 100 | 200 | 1.5 | 4,711 |
| AFC-100 A 200.20 | 100 | 200 | 2.0 | 6,281 |
| AFC-100 A 300.15 | 100 | 300 | 1.5 | 5,955 |
| AFC-100 A 300.20 | 100 | 300 | 2.0 | 7,939 |
| AFC-100 A 400.15 | 100 | 400 | 1.5 | 7,093 |
| AFC-100 A 400.20 | 100 | 400 | 2.0 | 9,457 |
| AFC-100 A 500.15 | 100 | 500 | 1.5 | 8,294 |
| AFC-100 A 500.20 | 100 | 500 | 2.0 | 11,058 |
| AFC-100 A 600.15 | 100 | 600 | 1.5 | 9,433 |
| AFC-100 A 600.20 | 100 | 600 | 2.0 | 12,577 |

Örnek Sipariş :

Yükseklik / Height (H) : 100 mm
Genişlik / Width (A) : 100 mm
Kalınlık / Thickness (T) : 1,5 mm
Sıcak Daldırma / Hot Dip Galvanized : SD



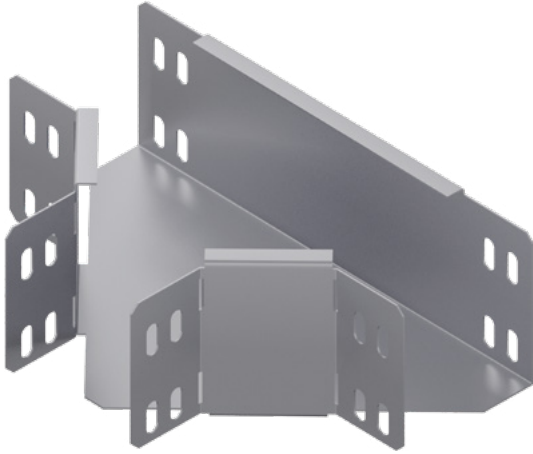
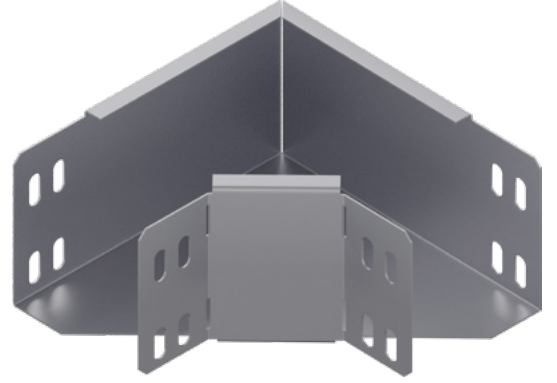
- ▶ Lütfen siparişlerinizde sipariş kodunu bildiriniz.
Please order by product code.
- ▶ Farklı kalınlık ve ölçülerdeki siparişleriniz için lütfen firmamızı arayınız.
Please contact us for your custom orders.
- ▶ Malzeme ağırlıkları yaklaşık değerlerdir, \pm % 10 değişim gösterebilir.
All material weights are approximate and may vary by +/- 10%.
- ▶ Standart uzunluk 2500 ve 3000 mm'dir.
Standard widths are available in 2500, and 3000 mm.



90° Yatay Dönüş Modülü

90° Horizontal Elbow Module

| Sipariş Kodu Order Code | Yükseklik Height (H) mm | Genişlik Width (AB) mm | Kalınlık Thickness (T) mm | Ağırlık Weight Kg./Ad. |
|----------------------------|-------------------------------|------------------------------|---------------------------------|------------------------------|
| AFC-100 AK 100.15 | 100 | 100 | 1.5 | 1,007 |
| AFC-100 AK 150.15 | 100 | 150 | 1.5 | 1,544 |
| AFC-100 AK 200.15 | 100 | 200 | 1.5 | 2,041 |
| AFC-100 AK 300.20 | 100 | 300 | 2.0 | 4,307 |
| AFC-100 AK 400.20 | 100 | 400 | 2.0 | 6,235 |
| AFC-100 AK 500.20 | 100 | 500 | 2.0 | 8,510 |
| AFC-100 AK 600.20 | 100 | 600 | 2.0 | 11,132 |



T Dönüş Modülü

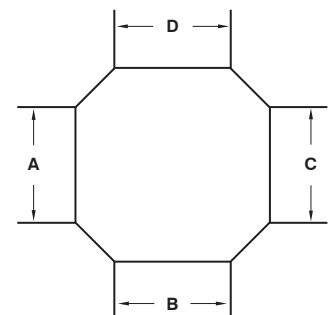
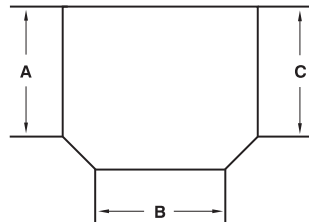
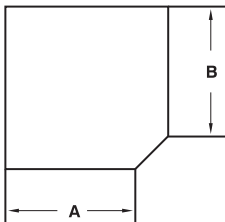
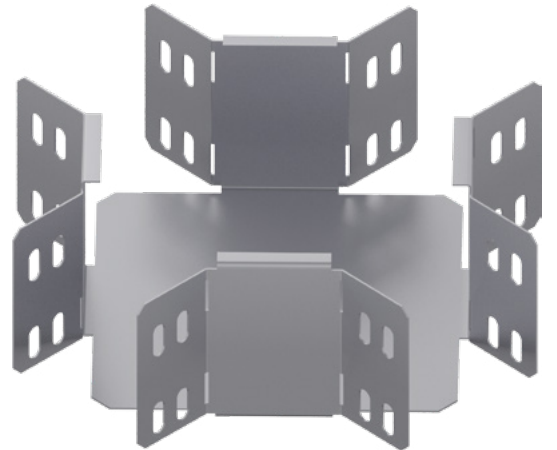
T Module

| Sipariş Kodu Order Code | Yükseklik Height (H) mm | Genişlik Width (ABC) mm | Kalınlık Thickness (T) mm | Ağırlık Weight Kg./Ad. |
|----------------------------|-------------------------------|-------------------------------|---------------------------------|------------------------------|
| AFC-100 AT 100.15 | 100 | 100 | 1.5 | 1,241 |
| AFC-100 AT 150.15 | 100 | 150 | 1.5 | 1,841 |
| AFC-100 AT 200.15 | 100 | 200 | 1.5 | 2,350 |
| AFC-100 AT 300.20 | 100 | 300 | 2.0 | 4,745 |
| AFC-100 AT 400.20 | 100 | 400 | 2.0 | 6,703 |
| AFC-100 AT 500.20 | 100 | 500 | 2.0 | 9,007 |
| AFC-100 AT 600.20 | 100 | 600 | 2.0 | 11,656 |

Dörtlü Bağlantı Modülü

+ Connection Module

| Sipariş Kodu Order Code | Yükseklik Height (H) mm | Genişlik Width (ABCD) mm | Kalınlık Thickness (T) mm | Ağırlık Weight Kg./Ad. |
|----------------------------|-------------------------------|--------------------------------|---------------------------------|------------------------------|
| AFC-100 AD 100.15 | 100 | 100 | 1.5 | 1,358 |
| AFC-100 AD 150.15 | 100 | 150 | 1.5 | 1,919 |
| AFC-100 AD 200.15 | 100 | 200 | 1.5 | 2,351 |
| AFC-100 AD 300.20 | 100 | 300 | 2.0 | 4,545 |
| AFC-100 AD 400.20 | 100 | 400 | 2.0 | 6,299 |
| AFC-100 AD 500.20 | 100 | 500 | 2.0 | 8,402 |
| AFC-100 AD 600.20 | 100 | 600 | 2.0 | 10,848 |





Sıcak Daldırma Hot Dip Galvanized

İç Bükey Dönüş Modülü

Flexible Vertical Bend - Inside

| Sipariş Kodu Order Code | Yükseklik Height (H) mm | Genişlik Width (AB) mm | Kalınlık Thickness (T) mm | Ağırlık Weight Kg./Ad. |
|----------------------------|-------------------------------|------------------------------|---------------------------------|------------------------------|
| AFC-100 AİB 100.15 | 100 | 100 | 1.5 | 2,920 |
| AFC-100 AİB 150.15 | 100 | 150 | 1.5 | 3,336 |
| AFC-100 AİB 200.15 | 100 | 200 | 1.5 | 3,769 |
| AFC-100 AİB 300.20 | 100 | 300 | 2.0 | 6,351 |
| AFC-100 AİB 400.20 | 100 | 400 | 2.0 | 7,566 |
| AFC-100 AİB 500.20 | 100 | 500 | 2.0 | 8,846 |
| AFC-100 AİB 600.20 | 100 | 600 | 2.0 | 10,062 |



Dış Bükey Dönüş Modülü

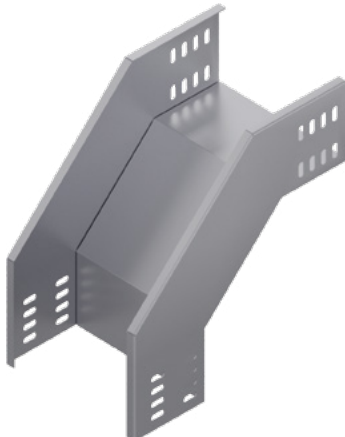
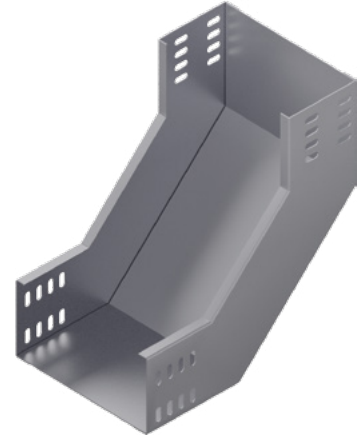
Flexible Vertical Bend - Outside

| Sipariş Kodu Order Code | Yükseklik Height (H) mm | Genişlik Width (AB) mm | Kalınlık Thickness (T) mm | Ağırlık Weight Kg./Ad. |
|----------------------------|-------------------------------|------------------------------|---------------------------------|------------------------------|
| AFC-100 ADB 100.15 | 100 | 100 | 1.5 | 2,920 |
| AFC-100 ADB 150.15 | 100 | 150 | 1.5 | 3,336 |
| AFC-100 ADB 200.15 | 100 | 200 | 1.5 | 3,769 |
| AFC-100 ADB 300.20 | 100 | 300 | 2.0 | 6,351 |
| AFC-100 ADB 400.20 | 100 | 400 | 2.0 | 7,566 |
| AFC-100 ADB 500.20 | 100 | 500 | 2.0 | 8,846 |
| AFC-100 ADB 600.20 | 100 | 600 | 2.0 | 10,062 |

İç Bükey Dönüş Modülü

90° Vertical Bend - Inside

| Sipariş Kodu Order Code | Yükseklik Height (H) mm | Genişlik Width (AB) mm | Kalınlık Thickness (T) mm | Ağırlık Weight Kg./Ad. |
|----------------------------|-------------------------------|------------------------------|---------------------------------|------------------------------|
| AFC-100 SİB 100.15 | 100 | 100 | 1.5 | 2,143 |
| AFC-100 SİB 150.15 | 100 | 150 | 1.5 | 2,427 |
| AFC-100 SİB 200.15 | 100 | 200 | 1.5 | 2,711 |
| AFC-100 SİB 300.20 | 100 | 300 | 2.0 | 3,279 |
| AFC-100 SİB 400.20 | 100 | 400 | 2.0 | 3,847 |
| AFC-100 SİB 500.20 | 100 | 500 | 2.0 | 4,415 |
| AFC-100 SİB 600.20 | 100 | 600 | 2.0 | 4,982 |



Dış Bükey Dönüş Modülü

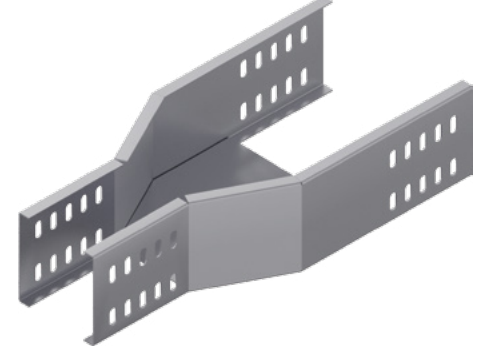
90° Vertical Bend - Outside

| Sipariş Kodu Order Code | Yükseklik Height (H) mm | Genişlik Width (AB) mm | Kalınlık Thickness (T) mm | Ağırlık Weight Kg./Ad. |
|----------------------------|-------------------------------|------------------------------|---------------------------------|------------------------------|
| AFC-100 SDB 100.15 | 100 | 100 | 1.5 | 2,056 |
| AFC-100 SDB 150.15 | 100 | 150 | 1.5 | 2,296 |
| AFC-100 SDB 200.15 | 100 | 200 | 1.5 | 2,537 |
| AFC-100 SDB 300.20 | 100 | 300 | 2.0 | 3,017 |
| AFC-100 SDB 400.20 | 100 | 400 | 2.0 | 3,498 |
| AFC-100 SDB 500.20 | 100 | 500 | 2.0 | 3,979 |
| AFC-100 SDB 600.20 | 100 | 600 | 2.0 | 4,459 |

Redüksiyon

Reduction

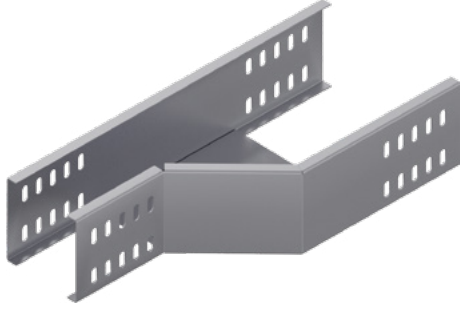
| Sipariş Kodu Order Code | Yükseklik Height (H) mm | Genişlik Width (A) mm | Genişlik Width (B) mm | Kalınlık Thickness (T) mm | Ağırlık Weight Kg./Ad. |
|----------------------------|-------------------------------|-----------------------------|-----------------------------|---------------------------------|------------------------------|
| AFC-100 AR 100.15 | 100 | 100 | 75 | 1.5 | 2,419 |
| AFC-100 AR 150.15 | 100 | 150 | 100 | 1.5 | 3,042 |
| AFC-100 AR 200.15 | 100 | 200 | 150 | 1.5 | 3,511 |
| AFC-100 AR 300.20 | 100 | 300 | 200 | 2.0 | 6,485 |
| AFC-100 AR 400.20 | 100 | 400 | 300 | 2.0 | 8,611 |
| AFC-100 AR 500.20 | 100 | 500 | 400 | 2.0 | 11,073 |
| AFC-100 AR 600.20 | 100 | 600 | 500 | 2.0 | 13,905 |



Redüksiyon - Sağ

Reduction - Right

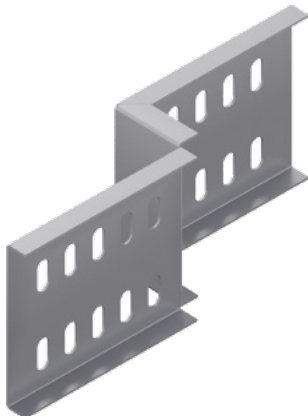
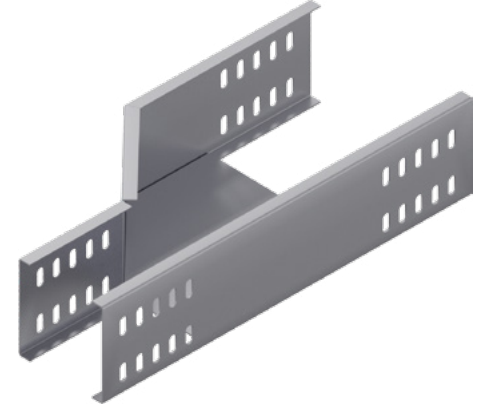
| Sipariş Kodu Order Code | Yükseklik Height (H) mm | Genişlik Width (A) mm | Genişlik Width (B) mm | Kalınlık Thickness (T) mm | Ağırlık Weight Kg./Ad. |
|----------------------------|-------------------------------|-----------------------------|-----------------------------|---------------------------------|------------------------------|
| AFC-100 ARR 100.15 | 100 | 100 | 75 | 1.5 | 1,348 |
| AFC-100 ARR 150.15 | 100 | 150 | 100 | 1.5 | 1,758 |
| AFC-100 ARR 200.15 | 100 | 200 | 150 | 1.5 | 2,083 |
| AFC-100 ARR 300.20 | 100 | 300 | 200 | 2.0 | 4,117 |
| AFC-100 ARR 400.20 | 100 | 400 | 300 | 2.0 | 5,737 |
| AFC-100 ARR 500.20 | 100 | 500 | 400 | 2.0 | 7,741 |
| AFC-100 ARR 600.20 | 100 | 600 | 500 | 2.0 | 10,105 |



Redüksiyon - Sol

Reduction - Left

| Sipariş Kodu Order Code | Yükseklik Height (H) mm | Genişlik Width (A) mm | Genişlik Width (B) mm | Kalınlık Thickness (T) mm | Ağırlık Weight Kg./Ad. |
|----------------------------|-------------------------------|-----------------------------|-----------------------------|---------------------------------|------------------------------|
| AFC-100 ARL 100.15 | 100 | 100 | 75 | 1.5 | 1,348 |
| AFC-100 ARL 150.15 | 100 | 150 | 100 | 1.5 | 1,758 |
| AFC-100 ARL 200.15 | 100 | 200 | 150 | 1.5 | 2,083 |
| AFC-100 ARL 300.20 | 100 | 300 | 200 | 2.0 | 4,117 |
| AFC-100 ARL 400.20 | 100 | 400 | 300 | 2.0 | 5,737 |
| AFC-100 ARL 500.20 | 100 | 500 | 400 | 2.0 | 7,741 |
| AFC-100 ARL 600.20 | 100 | 600 | 500 | 2.0 | 10,105 |



Z Redüksiyon

Z Reduction

| Sipariş Kodu Order Code | Yükseklik Height (H) mm | Genişlik Width (A) mm | Kalınlık Thickness (T) mm | Ağırlık Weight Kg./Ad. |
|----------------------------|-------------------------------|-----------------------------|---------------------------------|------------------------------|
| AFC-100 ZR 25.15 | 100 | 25 | 1.5 | 0,339 |
| AFC-100 ZR 50.15 | 100 | 50 | 1.5 | 0,372 |
| AFC-100 ZR 100.15 | 100 | 100 | 1.5 | 0,438 |
| AFC-100 ZR 150.15 | 100 | 150 | 1.5 | 0,504 |
| AFC-100 ZR 200.15 | 100 | 200 | 1.5 | 0,570 |
| AFC-100 ZR 300.20 | 100 | 300 | 2.0 | 0,935 |



Sıcak Daldırma Hot Dip Galvanized

“T” Ortadan İniş Modülü

“T” Middle Descent Module

| Sipariş Kodu Order Code | Yükseklik Height (H) mm | Genişlik Width (AB) mm | Kalınlık Thickness (T) mm | Ağırlık Weight Kg./Ad. |
|----------------------------|-------------------------------|------------------------------|---------------------------------|------------------------------|
| AFC-100 DTO 100.15 | 100 | 100 | 1.5 | 4,992 |
| AFC-100 DTO 150.15 | 100 | 150 | 1.5 | 5,638 |
| AFC-100 DTO 200.15 | 100 | 200 | 1.5 | 6,284 |
| AFC-100 DTO 300.20 | 100 | 300 | 2.0 | 7,576 |
| AFC-100 DTO 400.20 | 100 | 400 | 2.0 | 8,868 |
| AFC-100 DTO 500.20 | 100 | 500 | 2.0 | 10,161 |
| AFC-100 DTO 600.20 | 100 | 600 | 2.0 | 11,452 |



“T” Duvardan İniş Modülü

“T” Wall Descent Module

| Sipariş Kodu Order Code | Yükseklik Height (H) mm | Genişlik Width (AB) mm | Kalınlık Thickness (T) mm | Ağırlık Weight Kg./Ad. |
|----------------------------|-------------------------------|------------------------------|---------------------------------|------------------------------|
| AFC-100 DTD 100.15 | 100 | 100 | 1.5 | 2,974 |
| AFC-100 DTD 150.15 | 100 | 150 | 1.5 | 4,208 |
| AFC-100 DTD 200.15 | 100 | 200 | 1.5 | 6,230 |
| AFC-100 DTD 300.20 | 100 | 300 | 2.0 | 8,994 |
| AFC-100 DTD 400.20 | 100 | 400 | 2.0 | 18,944 |
| AFC-100 DTD 500.20 | 100 | 500 | 2.0 | 23,274 |
| AFC-100 DTD 600.20 | 100 | 600 | 2.0 | 27,392 |

Ek Elemanı

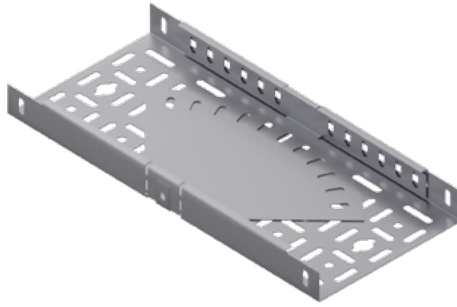
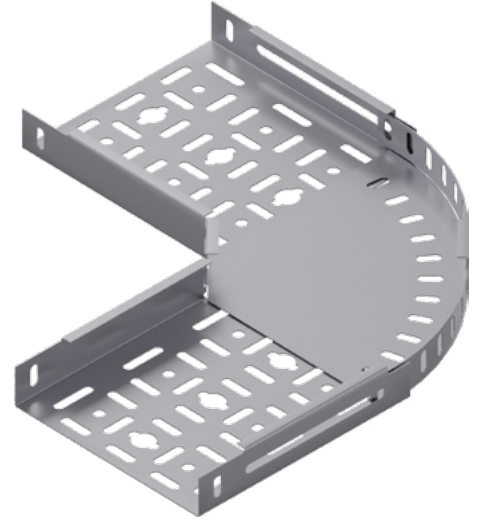
Joint Fitting

| Sipariş Kodu Order Code | Yükseklik Height (H) mm | Genişlik Width (A) mm | Kalınlık Thickness (T) mm | Ağırlık Weight Kg./Ad. |
|----------------------------|-------------------------------|-----------------------------|---------------------------------|------------------------------|
| AFC-100 AE 15.20 | 100 | 20 | 2.0 | 0,241 |



Flexible Dönüş Modülü Flexible Elbow Module

| Sipariş Kodu Order Code | Yükseklik Height (H) mm | Genişlik Width (AB) mm | Kalınlık Thickness (T) mm | Ağırlık Weight Kg./Ad. |
|----------------------------|-------------------------------|------------------------------|---------------------------------|------------------------------|
| AFC-100 FK 100.10 | 100 | 100 | 1.0 | 1,134 |
| AFC-100 FK 150.10 | 100 | 150 | 1.0 | 1,670 |
| AFC-100 FK 200.10 | 100 | 200 | 1.0 | 2,310 |
| AFC-100 FK 300.12 | 100 | 300 | 1.2 | 3,980 |
| AFC-100 FK 400.12 | 100 | 400 | 1.2 | 6,132 |
| AFC-100 FK 500.15 | 100 | 500 | 1.5 | 12,758 |
| AFC-100 FK 600.15 | 100 | 600 | 1.5 | 17,178 |



Seviye Değişirme Elemanı Level Change Unit

| Sipariş Kodu Order Code | Yükseklik Height (H) mm | Genişlik Width (A) mm | Kalınlık Thickness (T) mm | Ağırlık Weight Kg./Tk. |
|----------------------------|-------------------------------|-----------------------------|---------------------------------|------------------------------|
| AFC-100 SD 15.20 | 75 | 20 | 2.0 | 0,754 |

Separatör Seperator

| Sipariş Kodu Order Code | Yükseklik Height (H) mm | Genişlik Width (A) mm | Kalınlık Thickness (T) mm | Ağırlık Weight Kg./m. |
|----------------------------|-------------------------------|-----------------------------|---------------------------------|-----------------------------|
| AFC-100 SPK 20.15 | 100 | 20 | 1.5 | 1,536 |

